

LCD Access Controller

Networking / Stand-alone

Powerful
Function

Menu Operation

Simple Setting

AR-727H



Interface



Frequency



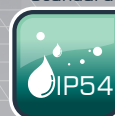
User capacity



Event log



Protection
standard



Take actual objects as products standards and pictures are just for reference

Features

- RS-485 communication interface
- Supporting WG port for anti-pass-back function
- TTL serial output for various application and lift control
- Selectable working frequencies: 125KHz/13.56MHz
- 3 control modes: M4/M6/M8
- User capacity: 1,024 / Event log: 1,200
- 3 access modes: Card only, Card or PIN, Card and PIN
- Built-in Watchdog to prevent system from hanging
- Built-in Real Time Clock & Anti-Tamper functions
- Including the input of door sensor, offering the alarm system of both door opening too long and being forced to open
- Built-in Multi-Output:
Door Lock/Alarm/Arming/Duress/Card Presenting
- 11 sets of Time Zone for various accessing in network
- 2 sets of Auto-Open Zone editable by stand-alone operation
- Intelligent to shift for stand-alone or networking mode while system disconnected
- Auto-lock of the keypad for 30 seconds after continuous failed operation by 3 times
- Coordinating with softwares for further application on access control, time attendance, payroll, and door/sensor image-monitor function
- Flexible to integrate with other equipment
- 8 LED and 1 beeper for identification
- Weatherproof design, can be used in any environment

SOYAL[®]

ACCESS CONTROL SYSTEM RFID solutions · Proximity & Smart cards · Hardware & Software OEM/ODM Service

RoHS
Compliant

ISO9001

FC CE MA

LCD Access Controller AR-727H

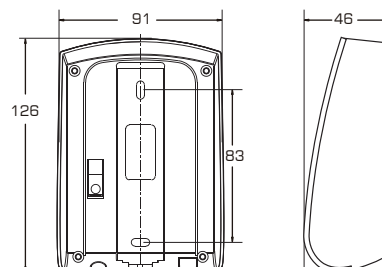


Specification

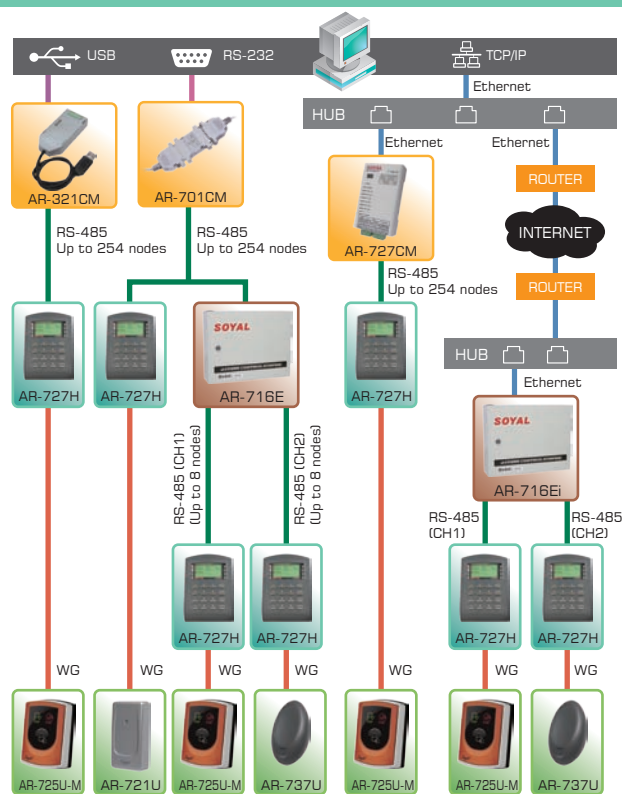
Frequency	125KHz	13.56MHz
Standard	EM Standard	·ISO14443A/B ·ISO15693 ·DESFire ·PSAM
Reading Range (Depending on tag or card)	10-18cm	2-8cm
Power Supply	9-16VDC	
Power Consumption	<3W	
Communication Interface	RS-485	
Baud Rate	9600 bps(N,8,1)	
Operating Temperature	-20°C to +60 °C	
Digital Input	1 Egress(R.T.E.) / 1 Door contact	
Relay Output	1 Alarm Relay / 1 Lock Relay	
Lock Relay Time	Toggle, 0.1-600 Sec.	
Alarm Time	Toggle, 1-600 Sec.	
Tamper Switch	Limit Switch (Form C)	
User Capacity	M4/M8	1,024
	M6	65,000
Event Log	M4/M8	1,200
External Reader	WG26/34	
Anti-pass-back	Yes(Only for M4/M8)	
Lift Control	32 floors, 1,024 Users	
Serial Port	TTL(4800bps,N,8,1)	
Real Time Clock	Yes	
LCD Panel	Yes	
Door Bell Button	No	
Transistor Output	Arming LED	
Protection standard	IP54	
Indicator	1Bi-Color LED & 1Beeper	
Keypad Material	ABS	
Housing Material	ABS	
Time Zone	11/63(Connect to Multi-Door Networking Controller)	
Operating Mode	Stand-Alone/Networking	
Color	Gray/Silver	
Dimension(mm)	111(L)X77(W)X26(H)	
Weight(g)	100±10	

Dimension(mm)

AR-727H



Structure



Application

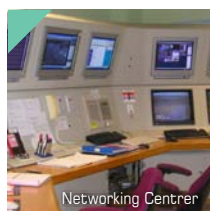
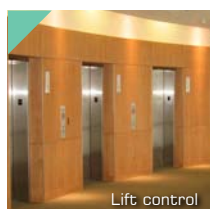
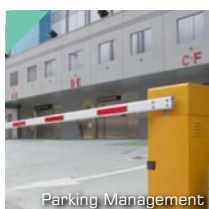
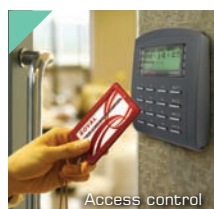
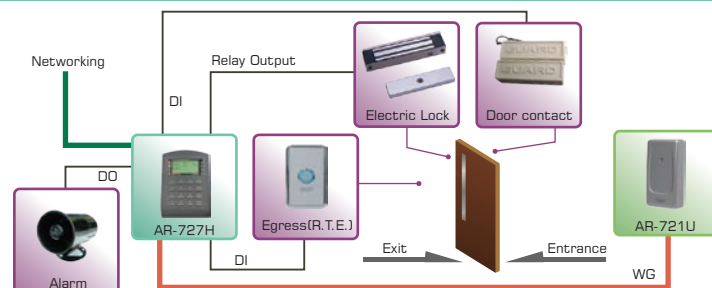


Diagram of Basic application for single door



Authorized dealer

SOYAL
ACCESS CONTROL SYSTEM

www.soyal.com

RoHS Compliant COR FC CE MA

V100702