



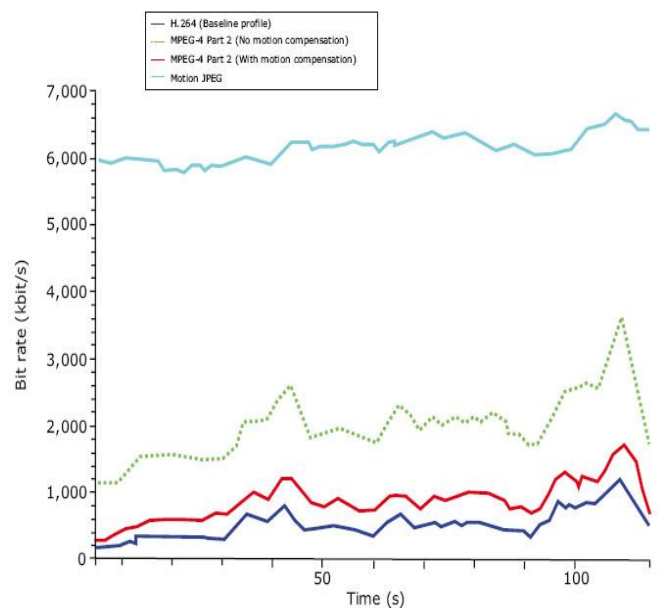
# Well Vision

16 Channels  
H.264 Network DVR  
DVR616A



- H.264 hardware – based codec
- Triplex function (Simultaneously playback, record and remote viewer)
- Adjustable recording resolution (Half D1 or CIF) & frame rate (120 ips or 240 ips)
- 1 Audio input and output
- Intelligent video content analytics Video Motion Detection
- 16 Sensor input and 1 alarm output
- Support up to 2 SATA Hard drives
- IE viewer / RS232 / RS485 / USB Backup / VGA/ CMS support
- 3GPP & Smart Phone mobile surveillance

DVR616A is based on the industry's most advanced **H.264 compression** hardware- based codec. Extensive laboratory and field testing has determined that recorded data with identical image quality based on H.264 codec is 4.5 times smaller than typical MPEG-4 codec and 3 times smaller than MPEG-4 ASP codec. Our hardware embedded video technology produces substantially lower bit-rates than PC-based DVRs. The DVR616A is extremely efficient – allowing maximum image storage on the hard drive - and very reliable and stable in operation. It is fully triplex, permitting remote users with the IR viewer to watch real – time events or retrieve and back up images from anywhere in the world without interrupting current live recording.



Bit rate comparison for a 115 seconds video stream, given the same level of image quality, among different video standards. The H.264 encoder was at least three times more efficient than an MPEG-4 encoder with no motion compensation and at least six times more efficient than Motion JPEG.

**TECHINICAL SPECIFICATION**

MONITORING	
Video Input	Composite: 16 x BNC
Video Output	16 x BNC looping, 2 x Composite (1 x CRT / 1 x SPOT), 1 x VGA
Display Resolution	720 x 480 / 720 x 576
Display Rate	Real-Time 480 / 400 IPS in Total
Features	Multiply Split, Sequencing (SEQ), Digital Zoom (2X)
RECORDING & PLAYBACK	
Compression	H.264 Hardware-Based Codec
Recording Resolution/ Rate (Adjustable)	720x240 or 720x288 up to 120 or 100 IPS 360x240 or 360x288 up to 240 or 200 IPS
Recording Quality	4 x Levels (High/ Best/ Normal/ Low)
Playback Rate	120 or 100 IPS on Half D1 Resolution 240 or 200 IPS on CIF Resolution
Recording Mode	Emergency (Manual), Scheduled (Round-the-Clock [RTC], Motion, Alarm)
Search Mode	Date/Time, Event (Motion, Alarm, Video Loss)
Features	Video Motion Detection (VMD), Privacy Recording
SYSTEM	
Languages	Multi-Language Support (English, Japanese, Chinese etc.)
Storage	2 x SATA HDD Slot
Data Export Media	1 x USB 2.0 Slot, 1 x CD-RW
HDD Management	Status, Format, Overwrite, Capacity Warning
Features	Firmware Upgrade (USB Flash Drive locally, HTTP remotely)
NETWORK	
Connection	1 x RJ-45 Ethernet
Protocols	PPPoE, Static IP, Dynamic IP, DDNS, DHCP, TCP/IP, SMTP, FTP
Remote Software	Management, Monitoring, Recording, Playback, PTZ, Event Search
Network Data Export	Backup, AVI
INTEGRATION	
Audio In/Out	1 x RCA In, 1 x RCA Out
Alarm In/Out	16 x In (NO / NC Switchable), 1 x Out (NO / NC)
PTZ Control Protocols	1 x RS-485 (Pelco D, Pelco P, etc)
User Interface	On Screen Display, Front Panel Buttons, IR Remote Control, USB Mouse
OTHER	
Dimensions (W x H x D)	430 x 88 x 382 mm
Unit Weight	6.3 kg (without HDD)
Operating Temperature	0 ~ 45°C
Operating Humidity	0 ~ 90%
Power	DC 12C, 4.5 A Adaptor
Approvals	CE, FCC, RoHS, WEEE

Specifications are subject to change without prior notice.

[www.well-vision.com](http://www.well-vision.com)